

Remote Control

Pay-Per-View

TV (mode)

Control your TV with the remote.

Source

Control the input source to your satellite receiver or TV.

Enter

In any menu, press ENTER to select a highlighted item. In SAT mode, press ENTER to tune to a channel whose numbers you have already pressed.

Go Back

To return to a previous menu.

Guide

To display the Interactive Program Guide. Press again to remove.

Info

To display detailed information about the current program or a highlighted program in the Guide. Press again to remove.

Browse

To see program information for channels and times other than the current channel and time. Press ENTER to tune to the program in the Browse banner. Press GO BACK to remove.

Help

To display the Help screens. Press again to remove.

CBL (mode)

Control your receiver with the remote for viewing cable TV signals.

Arrow keys

To highlight menu screen items, and to navigate between listings in the Browse banner.

Exit

To exit any menu and watch a program, or to display program information if already watching a program.

Options

To exit any menu and display the Options menu. Press again to remove.

Interests

To exit any menu and display the Interests menu. Press again to remove.

Future

To display a program banner of what's on in the future, while watching a program.

Ch +, Ch -

To change the channel. If using a menu, press to change channels without removing the menu. If using the Guide, press to move one screen up or down.

Last Ch

To return to the last channel watched.



It's easy to watch recent movies, live sports or concert events on Pay-Per-View, with convenient push-button ordering.*

To Order Pay-Per-View

1. Press **SAT** on your remote. Tune to any channel that displays Pay-Per-View programs.
2. Follow the instructions on the Purchase menu. Select a program and time to watch. Your selection, start/end times, ratings, and price will be displayed.
3. To purchase, press **ENTER**, and follow any additional instructions.
4. A confirmation screen appears. Press **ENTER** to confirm your purchase. If the program is on later, a countdown timer displays the time remaining before the program begins.



To Cancel Pay-Per-View

After confirming your purchase, you may only cancel it before the movie/event begins. To cancel the purchase, follow the on-screen instructions, or change the channel, before the movie/event begins.

* Receiver must be connected to a telephone jack. PPV purchasing screens will vary. Prices and programming shown in examples are for demonstration. When telephone jack is not connected, please contact your satellite/cable service provider.

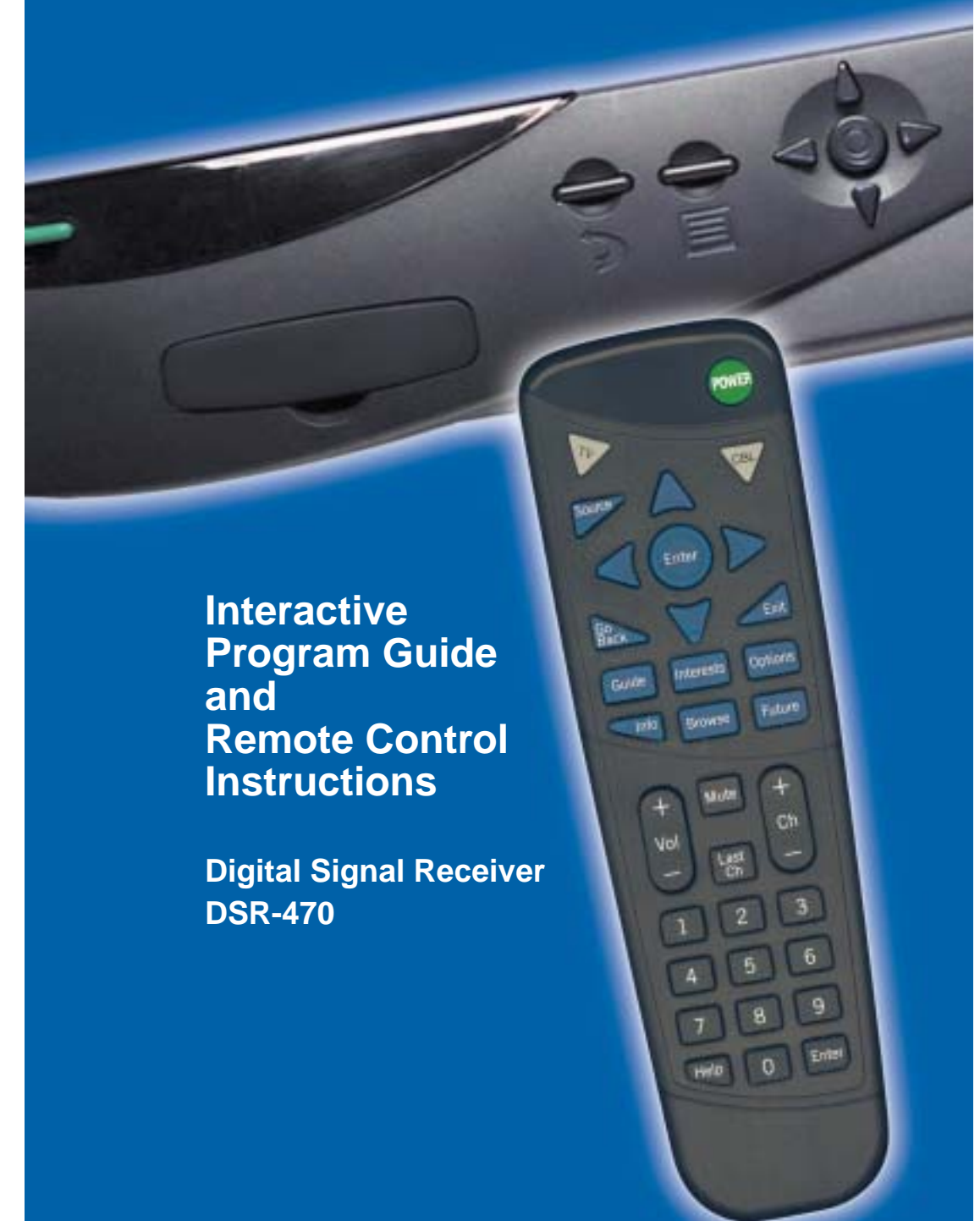


QUICK REFERENCE



MOTOROLA

Broadband Communications Sector



Interactive Program Guide and Remote Control Instructions

Digital Signal Receiver DSR-470



MOTOROLA

Broadband Communications Sector

MOTOROLA, the Stylized M Logo and all other trademarks indicated as such herein are trademarks of Motorola, Inc. © Reg. U.S. Pat. & Tm. Off. All other product or service names are the property of their respective owners. © 2001 Motorola, Inc. All rights reserved. Printed in the U.S.A. Features and functions subject to change without notice 10/01

Standard two-device remote pictured.

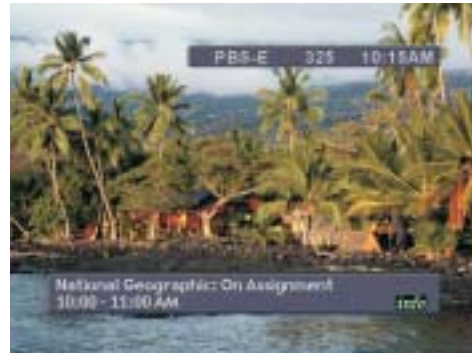
As with most universal remote controls on the market today, this remote control uses an infrared beam that transmits codes recorded on a memory chip that match codes used by TV manufacturers in their remote controls. TVs that were built before manufacturers started using these codes can not be controlled by this remote control.

Getting started with the Interactive Program Guide

Your new DSR-470 has a wealth of user-friendly features to make your entertainment experience more enjoyable. Accessing those features is simple and fun, using the remote control and the Interactive Program Guide (Guide). Here are the basics to get you started:

Watching TV

When tuning to a channel, program information automatically appears and disappears after allowing you time to read it. Press **ENTER** to display program information at any time while watching TV.



- Press **CH +** or **CH -** to change the channel.
- Press **LAST CH** to return to the previously tuned channel.
- Press **INFO** to see more detailed program information.
- Press **EXIT** to remove the banner.

Browsing While Watching TV

While watching a program, you can check what's showing on other channels now, and at other times, by pressing the **BROWSE** key. The Browse banner will appear with current program information.



- Press the **▲▼** arrow keys to check what's on other channels.
- Press the **◀▶** arrow keys to check earlier or later times on the current channel.
- Press **ENTER** to watch the program shown in the banner.
- Press **FUTURE** to display a different day and/or time.
- Press **INFO** to see more detailed program information.
- Press **GO BACK** to return to watching TV.



Using OPTIONS

- Press **OPTIONS** to display the Options menu.
- Press the **▲▼◀▶** keys to highlight a menu item. Items highlighted in yellow can be selected. Press **ENTER** to select a highlighted item.
- If the menu items are numbered, you can select one simply by pressing its number.
- Press **EXIT** to return to watching TV.

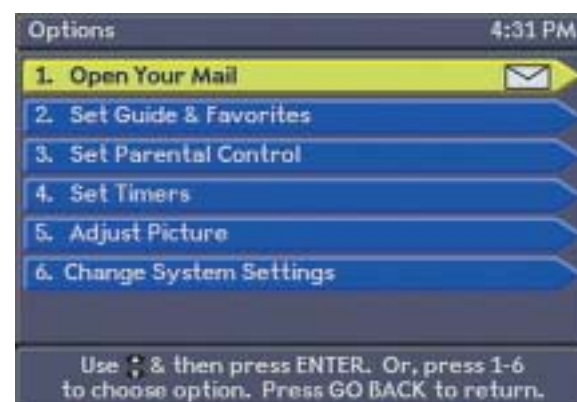
Press **GUIDE**



Press **INTERESTS**



Press **OPTIONS**



More detailed information is available in the User Guide.

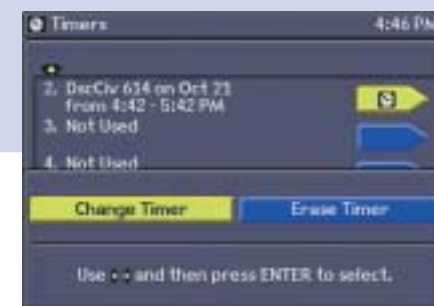
Displaying the Guide

- Press the **GUIDE** key once to display a full screen Guide.
- Press **GUIDE** again, or press **EXIT**, to return to watching TV.
- Press **GO BACK** to return to the last menu, or to watching TV.
- In order to display programming which is currently in progress, your Guide screen starts a half hour before the current time.

Displaying Your Interests

- For fast browsing, customize your Guide listings using the **INTERESTS** menu.
- Press **INTERESTS** to display the Interests menu.
 - Select a popular category — movies/drama, news/education, sports, music/radio, network series, or Pay-Per-View — to display exclusively these types of programs in your Guide.**
 - **FAVORITES** allows you to display only the channels you select. Create your Favorites lists in **OPTIONS**.
 - Select **ALL PROGRAMS** when you want to browse all programming choices.

** Available categories may vary according to your satellite/cable service provider.



Using the Guide

- Press the **▲▼** arrow keys to highlight different channels.
- Press **◀▶** arrow keys to highlight different times.
- Enter a channel number to see it highlighted at the top of the listings.
- Press **INFO** to display more detailed information.
- Press **CH +** or **CH -** to move one screen up or down through the Guide.
- To tune to a highlighted program that is on now, press **ENTER**. If it is on later, you can set a timer so you won't miss it (Refer to the User Guide.). If it is a Pay-Per-View program, you can order it using your remote.

